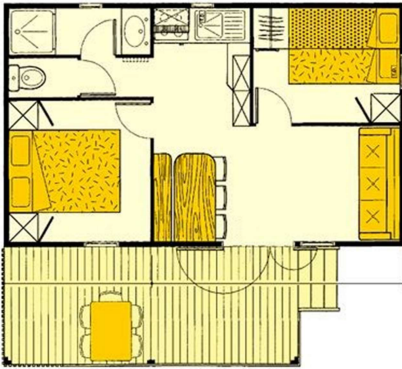


THE CHALETS

4 CHALETS 7 PEOPLE

- Equipped kitchen (gas, fridge, dishes)
- Shower room
- Separated toilets
- 1 bedroom with a double bed
- 1 bedroom with a double bed and a single bunk bed
- Living room with a sofa bed
- TV
- Covered terrace

Total area : 38m² of which 10m² of covered terrace

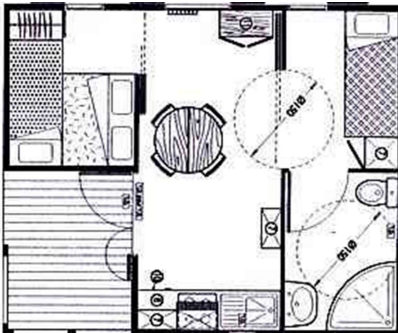


1 CHALET 4-5 PEOPLE

Equipped for disabled

- Equipped kitchen (gas, fridge, dishes)
- Shower room
- 1 bedroom with 2 single bunk beds
- 1 bedroom with a double bed and a single bunk bed
- TV
- Covered terrace

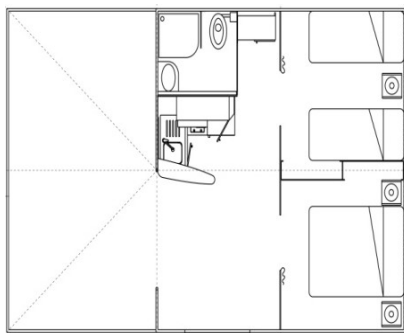
Total area : 30 m² of which 5 m² of covered terrace



6 LODGES 5 PEOPLE

- Equipped kitchen (gas, fridge, dishes)
- Shower, toilets and washbasin
- 1 bedroom with a double bed
- 1 bedroom with 3 single beds
- Covered terrace

Total area : 25 m² + 15m² of covered terrace



4 CANADA TENTS

- Equipped kitchen (gas, fridge, dishes)
- 1 bedroom with a double bed
- 1 bedroom with 3 single beds
- Covered terrace

Total area : 20 m² + 12m² of covered terrace

